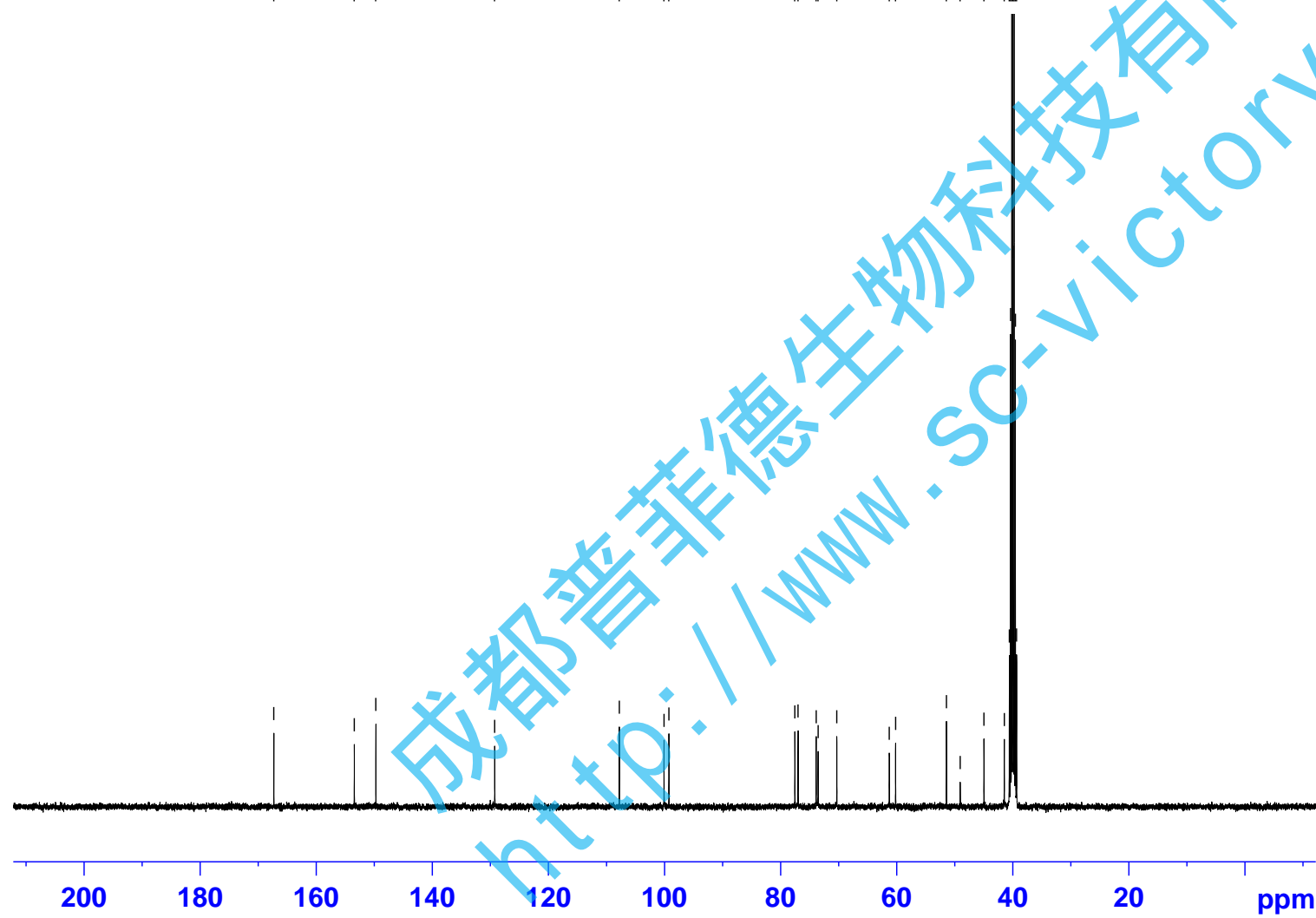


GLP140



— 167.34  
— 153.48  
— 149.76  
  
— 129.28

107.81  
100.11  
99.27  
77.56  
77.01  
73.89  
73.56  
70.33  
61.29  
60.21  
51.44  
49.07  
44.98  
41.47  
40.61  
40.40  
40.19  
39.98  
39.77  
39.56  
39.35



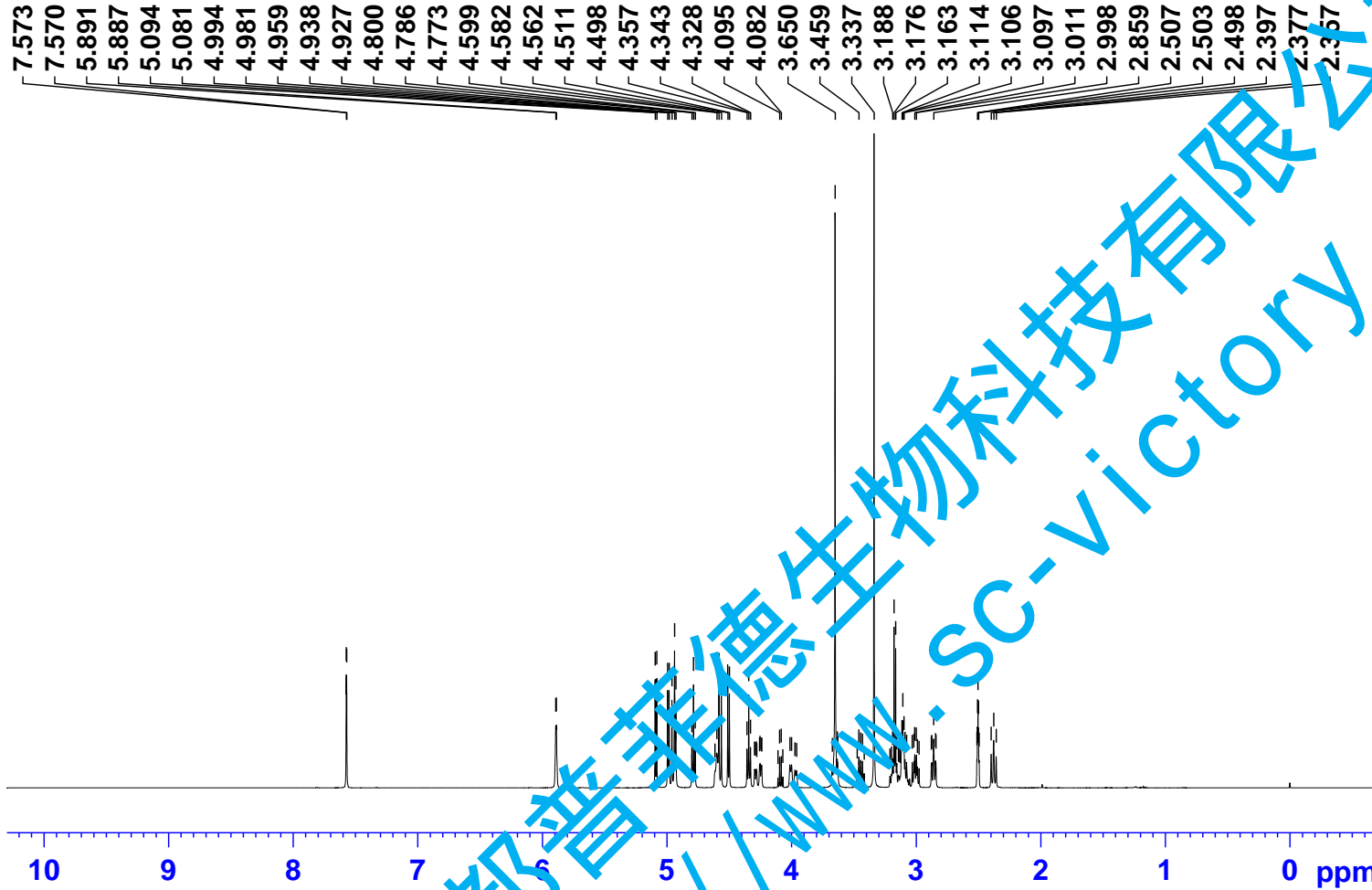
Current Data Parameters  
NAME GLP140  
EXPNO 11  
PROCNO 1

F2 - Acquisition Parameters  
INSTRUM spect  
PROBHD Z116098\_0564 (  
PULPROG zgpg30  
TD 65536  
SOLVENT DMSO  
NS 500  
DS 4  
SWH 24038.461 Hz  
FIDRES 0.733596 Hz  
AQ 1.3631488 sec  
RG 198.68  
DW 20.800 usec  
DE 6.50 usec  
TE 300.0 K  
D1 2.0000000 sec  
D11 0.0300000 sec  
TD0 1  
SFO1 100.6228298 MHz  
NUC1 13C  
P1 10.53 usec  
PLW1 69.16899872 W  
SFO2 400.1316005 MHz  
NUC2 1H  
CPDPRG[2] waltz16  
PCPD2 90.00 usec  
PLW2 14.56099987 W  
PLW12 0.19257000 W  
PLW13 0.09686100 W

F2 - Processing parameters  
SI 32768  
SF 100.6127685 MHz  
WDW EM  
SSB 0  
LB 1.00 Hz  
GB 0  
PC 1.40

成都普菲德生物科技有限公司  
http://www.sc-victory.com

GLP140



Current Data Parameters  
 NAME GLP140  
 EXPNO 10  
 PROCNO 1

F2 - Acquisition Parameters

INSTRUM spect  
 PROBHD Z116098\_0564 (  
 PULPROG zg30  
 TD 65536  
 SOLVENT DMSO  
 NS 16  
 DS 2  
 SWH 8012.820 Hz  
 FIDRES 0.244532 Hz  
 AQ 4.0894465 sec  
 RG 70.67  
 DW 62.400 usec  
 DE 6.50 usec  
 TE 300.0 K  
 D1 1.00000000 sec  
 TD0 1  
 SFO1 400.1324708 MHz  
 NUC1 1H  
 P1 10.35 usec  
 PLW1 14.56099987 W

F2 - Processing parameters  
 SI 65536  
 SF 400.1300025 MHz  
 WDW EM  
 SSB 0  
 LB 0.30 Hz  
 GB 0  
 PC 1.00

成都普菲德生物科技有限公司  
<http://www.SC-victory.com>